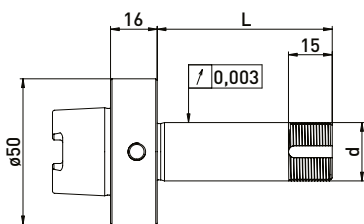
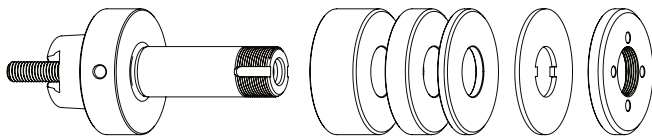


# Strausak similar HSK50 // Shaft $\varnothing 20$ mm // RS $\varnothing 50$ mm

For Strausak Promat tool grinding machines for Ring set  $\varnothing 50$  mm

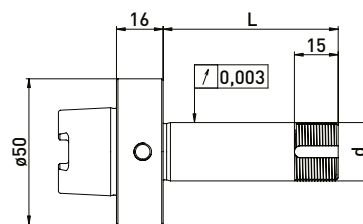
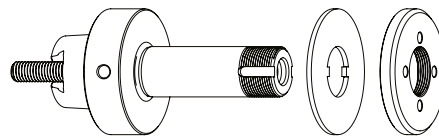
## GWA similar HSK50 // $\varnothing 20$ mm // RS $\varnothing 50$ mm



Delivered equipped:  
Ring set  $\varnothing 50$  mm, lock washer, clamping nut and tightening screw

Order No.	Taper	d	L	Ring set $\varnothing 50$ mm		
				B20	B10	B4
300062032	similar HSK50	20	60	1	1	4

## GWA similar HSK50 // $\varnothing 20$ mm // without RS



Delivered equipped:  
Lock washer, clamping nut and tightening screw

Order No.	Taper	d	L
300062031	similar HSK50	20	60

## Accessories Strausak Promat grinding wheel adapter similar HSK50 // Shaft $\varnothing 20$ mm // Ring set $\varnothing 50$ mm

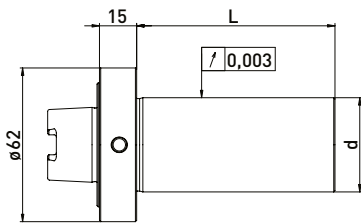
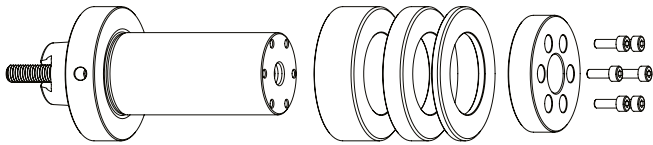
Order No.	Name	
350050010	Universal assembly device $\varnothing 50$	
350040010	Clamping nut wrench PC27 for $\varnothing 20$	
350040011	Clamping nut wrench PC27 for $\varnothing 20$	
350020021	*Balancing weight pair for clamping nut $\varnothing 50$ // 100gmm	

Order No.	Name	
350011020	Spacer ring $\varnothing 50$ x $\varnothing 20$ x 20	
350011010	Spacer ring $\varnothing 50$ x $\varnothing 20$ x 10	
350011004	Spacer ring $\varnothing 50$ x $\varnothing 20$ x 4	
350015003	Support washer $\varnothing 50$ x $\varnothing 75$ x $\varnothing 20$ x 6	
350030010	Lock washer $\varnothing 50$ x $\varnothing 20$ x 2	
350020060	Clamping nut $\varnothing 50$ x 6 x M20 x 1 PC27	
350020020	*Clamping nut with balancing option $\varnothing 50$ x 8,5 M20 x 1,0 PC27	

# Strausak similar HSK50 // Shaft $\varnothing 38$ mm // RS 62 mm

For Strausak Promat tool grinding machines with ring set  $\varnothing 62$  mm

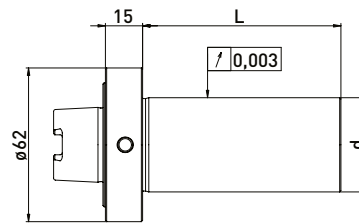
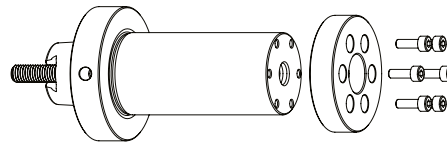
## GWA similar HSK50 // $\varnothing 38$ mm // RS 62 mm



Delivered equipped:  
Ring set  $\varnothing 62$  mm, clamping flange, 4pc. allen screw and tightening screw

Order No.	Taper	d	L	Ring set $\varnothing 62$ mm		
				B20	B10	B4
300062332	similar HSK50	38	80	2	2	4


## GWA similar HSK50 // $\varnothing 38$ mm // without RS



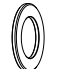




Delivered equipped:  
Clamping flange, 4pc. allen screw and tightening screw

Order No.	Taper	d	L
300062331	similar HSK50	38	80

## Accessories Strausak Promat grinding wheel adapter similar HSK50 // Shaft $\varnothing 20$ mm // Ring set $\varnothing 50$ mm

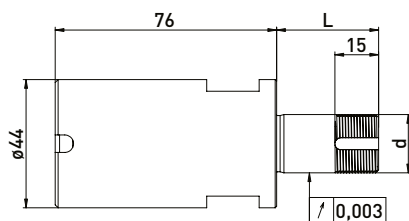
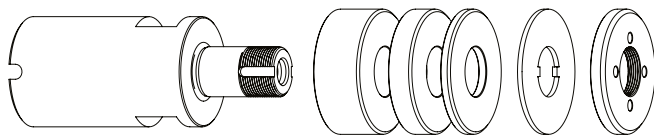
Order No.	Name
350050040	Assembly device Strausak $\varnothing 62$ 

Order No.	Name	
350013320	Spacer ring $\varnothing 62 \times \varnothing 38 \times 20$	
350013310	Spacer ring $\varnothing 62 \times \varnothing 38 \times 10$	
350013304	Spacer ring $\varnothing 62 \times \varnothing 38 \times 4$	
350020040	Clamping flange $\varnothing 54 \times 12$ 	

# Strausak Internal taper // Shaft $\varnothing 20\text{mm}$ // RS $\varnothing 50\text{ mm}$

For Strausak Fleximat tool grinding machines with ring set  $\varnothing 50\text{ mm}$

## GWA Strausak Internal taper // $\varnothing 20\text{mm}$ // RS $\varnothing 50\text{ mm}$



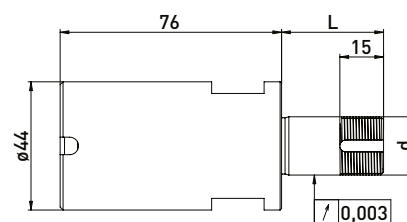
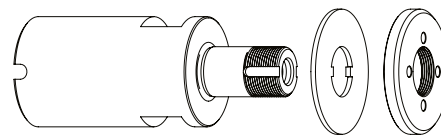
Delivered equipped:

Ring set  $\varnothing 50\text{ mm}$ , lock washer, clamping nut and clamping screw

Ring set  $\varnothing 50\text{ mm}$

Order No.	Internal taper	d	L	B 20	B 10	B 4
300063012	Strausak	20	35	-	1	3
300063022	Strausak	20	60	1	1	4

## GWA Strausak Internal taper // $\varnothing 20\text{mm}$ // without RS



Delivered equipped:

Lock washer, clamping nut and clamping screw

Order No.	Internal taper	d	L
300063011	Strausak	20	35
300063021	Strausak	20	60

## Accessories Strausak Fleximat grinding wheel adapter Strausak Internal taper // Shaft $\varnothing 20\text{ mm}$ // Ring set $\varnothing 50\text{ mm}$

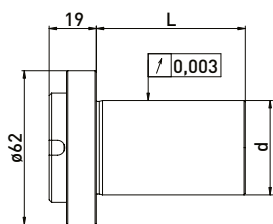
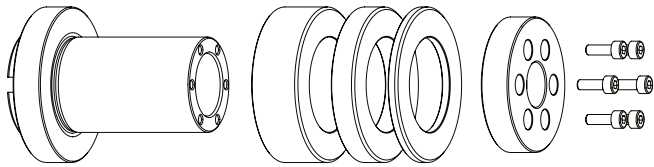
Order No.	Name	
350050010	*Universal assembly device $\varnothing 50$	
350015007	*Adapter sleeve Strausak clamping diameter $\varnothing 44$  (Reduction for Strausak $\varnothing 44 \times \varnothing 50$ for universal assembly device)	
350040010	Clamping nut wrench PC27 for $\varnothing 20$	
350040011	Clamping nut wrench PC27 for $\varnothing 20$	
350020021	*Balancing weight pair for clamping nut $\varnothing 50$ // 100gmm	

Order No.	Name	
350011020	Spacer ring $\varnothing 50 \times \varnothing 20 \times 20$	
350011010	Spacer ring $\varnothing 50 \times \varnothing 20 \times 10$	
350011004	Spacer ring $\varnothing 50 \times \varnothing 20 \times 4$	
350030010	Lock washer $\varnothing 50 \times \varnothing 20 \times 2$	
350020060	Clamping nut $\varnothing 50 \times 6 \times \text{M}20 \times 1$ PC27	
350020020	*Clamping nut with balancing option $\varnothing 50 \times 8,5 \text{ M}20 \times 1,0$ PC27	

# Strausak Internal taper // Shaft $\varnothing 38\text{mm}$ // RS 62 mm

For Strausak Fleximat tool grinding machines with ring set  $\varnothing 62$  mm

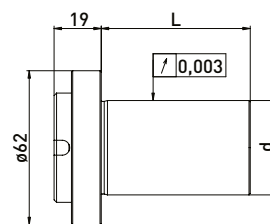
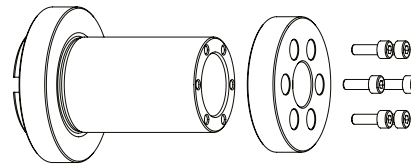
## GWA Strausak Internal taper // $\varnothing 38\text{mm}$ // RS 62 mm



Delivered equipped:  
Ring set  $\varnothing 62$  mm, clamping flange, allen screw 4pc. and tightening screw

Order No.	Internal taper	d	L	Ring set $\varnothing 62$ mm		
				B 20	B 10	B 4
300063332	Strausak	38	60	1	2	4

## GWA Strausak Internal taper // $\varnothing 38$ mm // without RS



Delivered equipped:  
clamping flange, allen screw 4pc. and tightening screw

Order No.	Internal taper	d	L
300063331	Strausak	38	60

## Accessories Strausak Fleximat grinding wheel adapter Strausak Internal taper // Shaft $\varnothing 38$ mm // Ring set $\varnothing 62\text{mm}$

Order No.	Name
350050040	Assembly device Strausak $\varnothing 62$



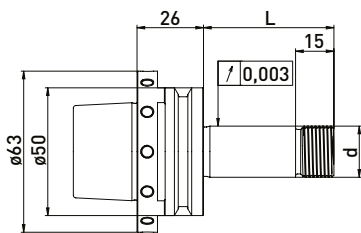
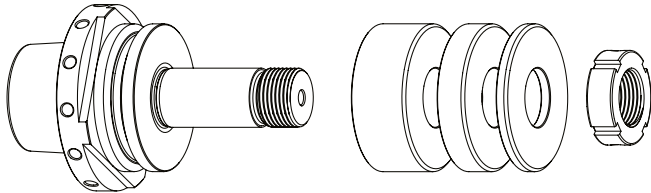
Order No.	Name
350013320	Spacer ring $\varnothing 62 \times \varnothing 38 \times 20$
350013310	Spacer ring $\varnothing 62 \times \varnothing 38 \times 10$
350013304	Spacer ring $\varnothing 62 \times \varnothing 38 \times 4$
350020040	Clamping flange $\varnothing 54 \times 12$

\*related items

# Strausak HSK-E50 // Shaft $\varnothing 20$ mm // RS $\varnothing 50$ mm

For Strausak tool grinding machines with ring set  $\varnothing 50$  mm

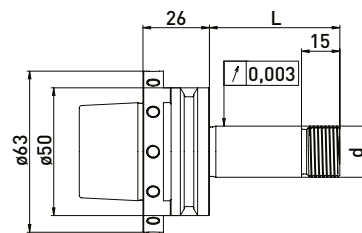
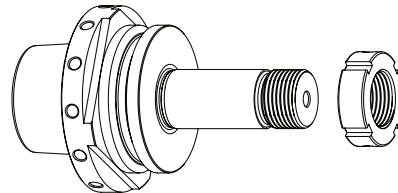
## GWA HSK-E50 // $\varnothing 20$ mm // RS $\varnothing 50$ mm



Delivered equipped:  
Ring set  $\varnothing 50$  mm and clamping nut

Order No.	HSK	d	L	Ring set $\varnothing 50$ mm		
				B 20	B 10	B 4
300150612	HSK-50	20	51	1	1	2
300150632	HSK-50	20	81	2	2	2


## GWA HSK-E50 // $\varnothing 20$ mm // without RS

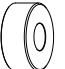

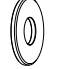




Delivered equipped:  
Clamping nut

Order No.	HSK	d	L
300150611	HSK-50	20	51
300150631	HSK-50	20	81

## Accessories Strausak grinding wheel adapter HSK-E50 // Shaft $\varnothing 20$ mm // Ring set $\varnothing 50$ mm

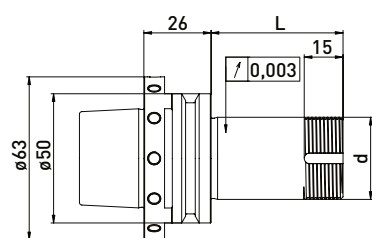
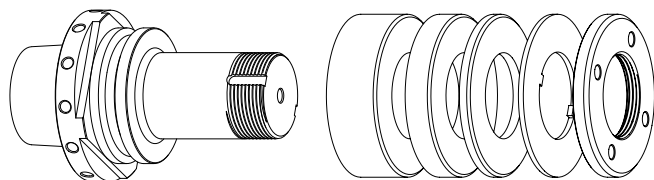
Order No.	Name
350040051	Hook wrench 30 - 32 mm 

Order No.	Name
350011520	Spacer ring Rollomatic $\varnothing 50 \times \varnothing 20 \times 20$ 
350011510	Spacer ring Rollomatic $\varnothing 50 \times \varnothing 20 \times 10$ 
350011504	Spacer ring Rollomatic $\varnothing 50 \times \varnothing 20 \times 4$ 
350020121	Clamping nut MRR20 x 1,5 M20 x 1,5 $\varnothing 32 \times 10$ 
350015003	Support washer $\varnothing 50 \times \varnothing 75 \times \varnothing 20 \times 6$ 

# Strausak HSK-E50 // Shaft $\varnothing 31,75$ mm (1¼) // RS $\varnothing 60$ mm

For Strausak tool grinding machines with ring set  $\varnothing 60$  mm

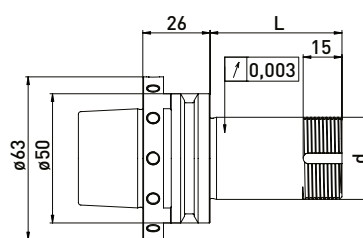
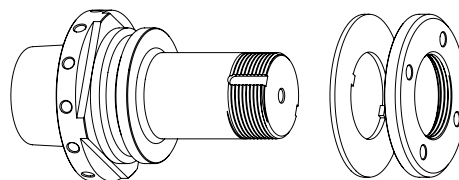
## GWA HSK-E50 // $\varnothing 31,75$ mm // RS $\varnothing 60$ mm



Delivered equipped:  
Ring set  $\varnothing 60$  mm, lock washer and clamping nut

Order No.	HSK	d	L	Ring set $\varnothing 60$ mm		
				B20	B10	B4
300150712	HSK-50E	31,75	51	-	1	3
300150732	HSK-50E	31,75	81	1	1	3

## GWA HSK-E50 // $\varnothing 31,75$ mm // without RS



Delivered equipped:  
Lock washer and clamping nut

Order No.	HSK	d	L
300150711	HSK-50E	31,75	51
300150731	HSK-50E	31,75	81

## Accessories Strausak grinding wheel adapter HSK-E50 // $\varnothing 31,75$ mm (1¼) // Ring set $\varnothing 60$ mm

Order No.	Name	
350040030	*Clamping nut wrench PC39 for clamping nut with blancing option	
350040020	Clamping nut wrench PC45 for $\varnothing 32$	
350020023	*Balancing weight pair for clamping nut $\varnothing 60$ // 200gmm	

Order No.	Name	
350011420	Spacer ring $\varnothing 60$ x $\varnothing 31,75$ x 20	
350011410	Spacer ring $\varnothing 60$ x $\varnothing 31,75$ x 10	
350011404	Spacer ring $\varnothing 60$ x $\varnothing 31,75$ x 4	
350030060	Lock washer $\varnothing 60$ x $\varnothing 32$ x 1,8	
350020066	Clamping nut $\varnothing 60$ x 6 x M32 x 1,5 PC45	
350020022	*Clamping nut with balancing option $\varnothing 60$ x 9 M32 x 1,5 PC39	

\*related items