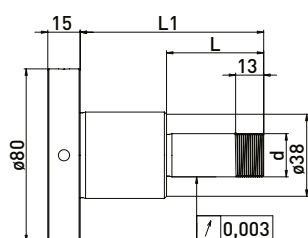
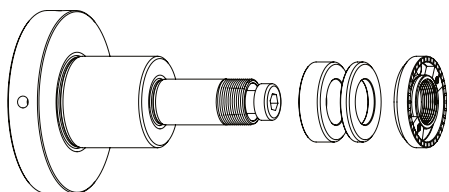


EWAG $\varnothing 80$ mm // Shaft $\varnothing 20$ mm // RS $\varnothing 35$ mm

For EWAG tool grinding machines with ring set $\varnothing 35$ mm

GWA $\varnothing 80$ mm // $\varnothing 20$ mm // RS $\varnothing 35$ mm



Delivered equipped:

Ring set $\varnothing 35$ mm, clamping nut with balancing weights and M10 clamping screw

Order No.	d	L	L1	Ring set $\varnothing 35$ mm	
				B 10	B4
300140012	20	45	85	2	3

Accessories EWAG grinding wheel adapter 80 mm // Shaft $\varnothing 20$ mm // Ring set $\varnothing 35$ mm

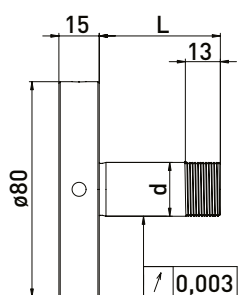
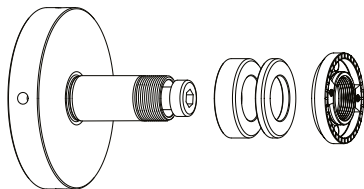
Order No.	Name	
350020081	*Balancing weight pair for clamping nut $\varnothing 35$ // 40gmm	
350040040	*Clamping nut wrench PC29 for $\varnothing 20$ for clamping nut with balancing option	
350040041	*Spannmutterschlüssel TK29 für $\varnothing 20$	

Order No.	Name	
350012004	Spacer ring $\varnothing 35 \times \varnothing 20 \times 4$	
350012010	Spacer ring $\varnothing 35 \times \varnothing 20 \times 10$	
350020080	*Clamping nut with balancing option $\varnothing 35 \times \varnothing 40 \times 8 \times M20 \times 1$ PC29	

EWAG $\varnothing 80$ mm // Shaft $\varnothing 20$ mm // RS $\varnothing 35$ mm

For EWAG tool grinding machines with ring set $\varnothing 35$ mm

GWA $\varnothing 80$ mm // $\varnothing 20$ mm // RS $\varnothing 35$ mm



Delivered equipped:
Ring set $\varnothing 35$ mm, clamping nut with balancing weights and M10 clamping screw

Order No.	d	L	Ring set $\varnothing 35$ mm	
			B 10	B 4
300141012	20	20	-	2
300141022	20	45	2	3

Accessories EWAG grinding wheel adapter 80 mm // Shaft $\varnothing 20$ mm // Ring set $\varnothing 35$ mm

Order No.	Name	
350020081	*Balancing weight pair for clamping nut $\varnothing 35$ // 40gmm	
350040040	*Clamping nut wrench PC29 for $\varnothing 20$ for clamping nut with balancing option	
350040041	*Spannmutterschlüssel TK29 für $\varnothing 20$	

Order No.	Name	
350012004	Spacer ring $\varnothing 35 \times \varnothing 20 \times 4$	
350012010	Spacer ring $\varnothing 35 \times \varnothing 20 \times 10$	
350020080	*Clamping nut with balancing option $\varnothing 35 \times \varnothing 40 \times 8 \times M20 \times 1$ PC29	

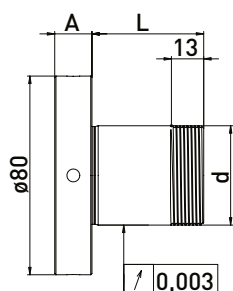
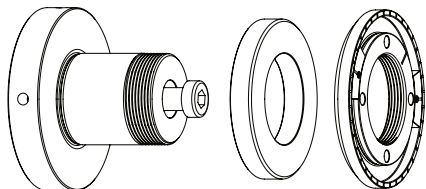
Order No.	Name
300149001	M10 adapter screw to $\varnothing 10$ EWAG M10 for article 300140012
300149002	M10 adapter screw to $\varnothing 10$ EWAG M10 for article 300141022

*related items

EWAG $\varnothing 80$ mm // Shaft $\varnothing 40$ mm // RS 70 mm

For EWAG tool grinding machines with ring set $\varnothing 70$ mm

GWA $\varnothing 80$ mm // $\varnothing 40$ mm // RS 70 mm

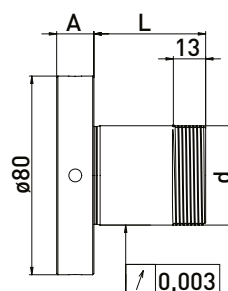
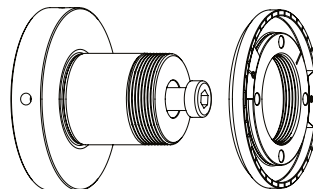


Delivered equipped:
 Spacer ring $\varnothing 70$ mm, clamping nut with balancing weights
 and M10 clamping screw

Ring set $\varnothing 70$ mm

Order No.	d	L	A	B 12
300140242	40	45	15	1

GWA $\varnothing 80$ mm // $\varnothing 40$ mm // without RS



Delivered equipped:
 Clamping nut with balancing weights and M10 clamping
 screw

Order No.	d	L	A
300140212	40	20	15
300140222	40	20	30
300140232	40	20	49

Accessories EWAG grinding wheel adapter $\varnothing 80$ mm // Shaft $\varnothing 40$ mm // RS 70 mm

Order No.	Name
350020082	*Balancing weight pair for clamping nut $\varnothing 78$ EWAG



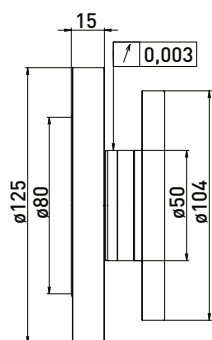
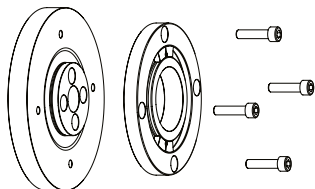
Order No.	Name
350014012	Spacer ring $\varnothing 70$ x $\varnothing 40$ x 12
350020025	*Clamping nut with balancing option $\varnothing 78$ x 8,5 x M40x1,5



EWAG $\varnothing 125$ mm // Shaft $\varnothing 50$ mm

For EWAG tool grinding machines

GWA $\varnothing 125$ // $\varnothing 32$ mm



Delivered equipped:
Flange and counter-flange with balancing weights and
4pc. M6x25 clamping screws

Order No.	Name
300140311	Grinding wheel adapter EWAG $\varnothing 125$ x $\varnothing 50$ x A15

Accessories EWAG grinding wheel adapter $\varnothing 125$ // Shaft $\varnothing 32$ mm

Order No.	Name
350020082	Balancing weight pair for clamping nut $\varnothing 78$ EWAG

